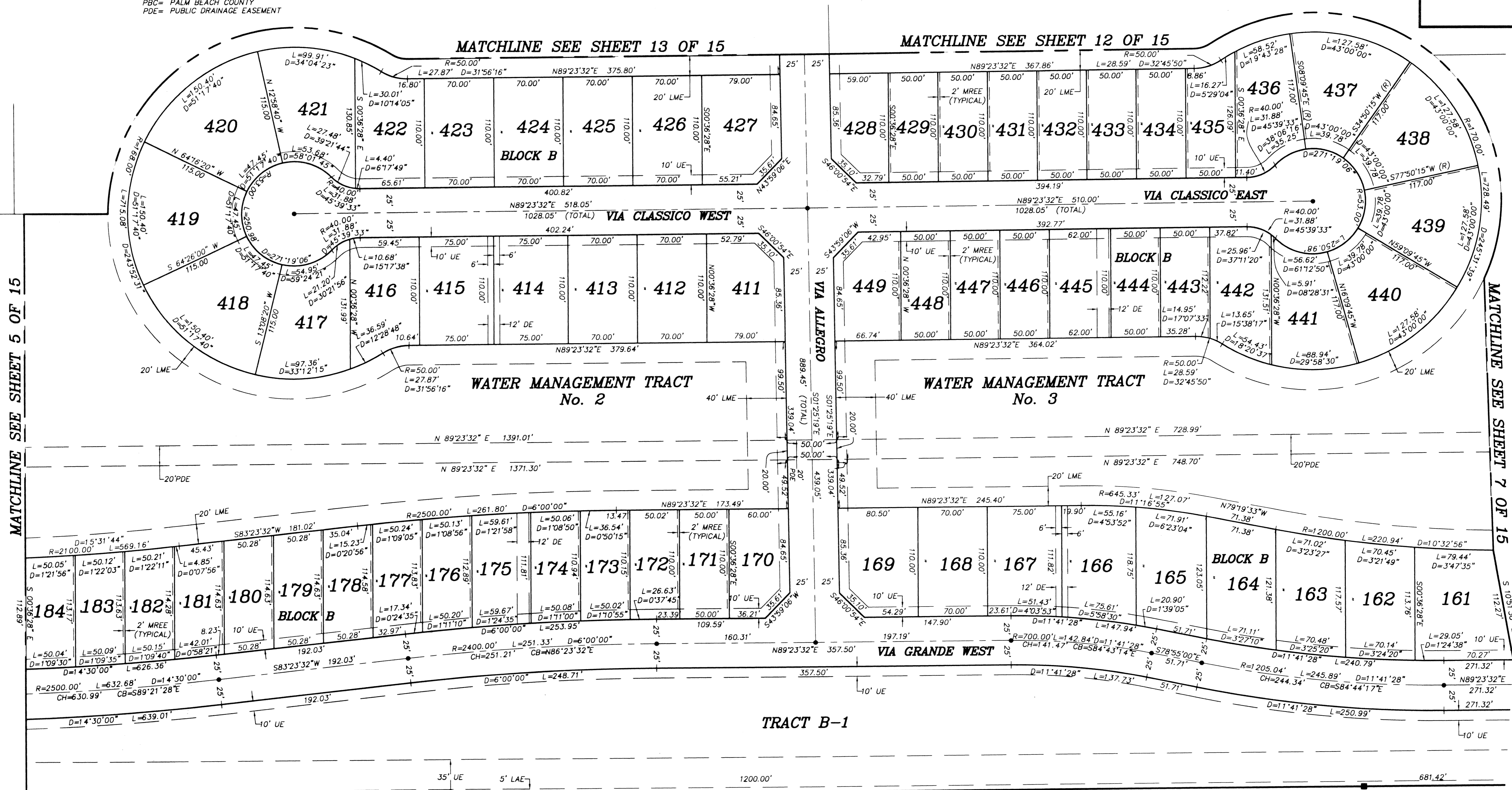


- LEGEND:**
 D= DELTA (CENTRAL ANGLE)
 L= LENGTH
 R= RADIUS
 PB= PLAT BOOK
 O.R.B.= OFFICIAL RECORD BOOK
 PG= PAGE
 ■ = PERMANENT REFERENCE MONUMENT "LB 4318"
 (UNLESS OTHERWISE NOTED)
 ● = PERMANENT CONTROL POINT "LB 4318"
 (R)= RADIAL
 UE= UTILITY EASEMENT
 DE= DRAINAGE EASEMENT
 MREE= MAINTENANCE & ROOF EAVE EASEMENT
 LME= LAKE MAINTENANCE EASEMENT
 LAE= LIMITED ACCESS EASEMENT
 WMT= WATER MANAGEMENT TRACT
 PLS= PROFESSIONAL LAND SURVEYOR
 PSM= PROFESSIONAL SURVEYOR & MAPPER
 LB= LICENSED SURVEYING & MAPPING BUSINESS
 CH= CHORD DISTANCE
 CB= CHORD BEARING
 LWDD= LAKE WORTH DRAINAGE DISTRICT
 PBC= PALM BEACH COUNTY
 PDE= PUBLIC DRAINAGE EASEMENT

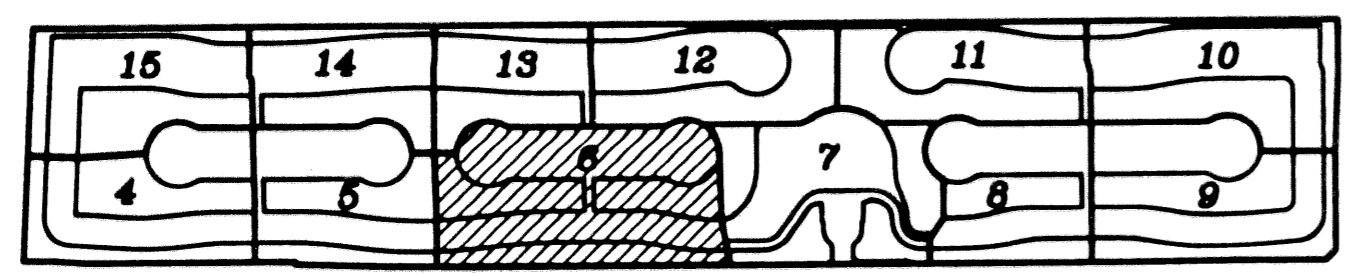
BUENA VIDA
 BEING A REPLAT OF A PORTION OF BLOCKS 16 AND 17 OF PALM BEACH FARMS COMPANY
 PLAT No. 3, AS RECORDED IN PLAT BOOK 2, PAGES 45 THROUGH 54 OF THE PUBLIC
 RECORDS OF PALM BEACH COUNTY, FLORIDA, IN PART OF SECTIONS 7 AND 8, TOWNSHIP
 44 SOUTH, RANGE 42 EAST, VILLAGE OF WELLINGTON, PALM BEACH COUNTY, FLORIDA.
 SHEET 6 OF 15
 MARCH 2002



MATCHLINE SEE SHEET 5 OF 15

MATCHLINE SEE SHEET 7 OF 15

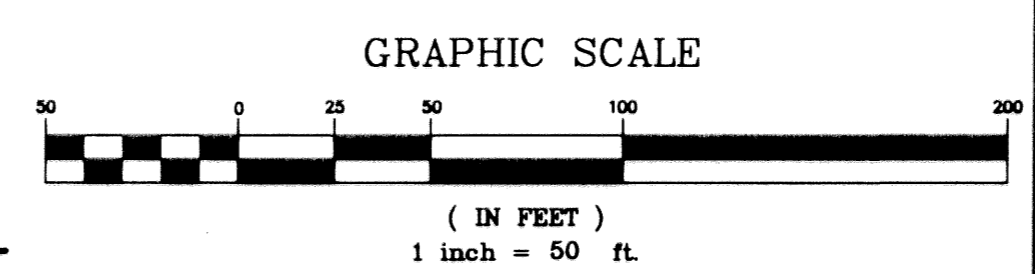
D=2'18'46"
 L=691.41'
 R=17128.73'



SHEET INDEX

FOREST HILL BOULEVARD

NORTH RIGHT OF WAY LINE
 PER RPB 2, PG 147
 N 89°23'32" E
 3572.01'



BUENA VIDA		NICK MILLER, INC. Surveying & Mapping Consultants		SHEET NO. 6	SCALE: 1" = 50'
SUITE 105 2560 RCA BLVD. PALM BEACH GARDENS, FLORIDA 33410 TEL 561 627-5200 FAX 561 627-0983 D.B.P.R. LICENSED BUSINESS NO. 4318		DATE: MARCH 2002		JOB NO. 1008.009	
		FILE: 1008.09			